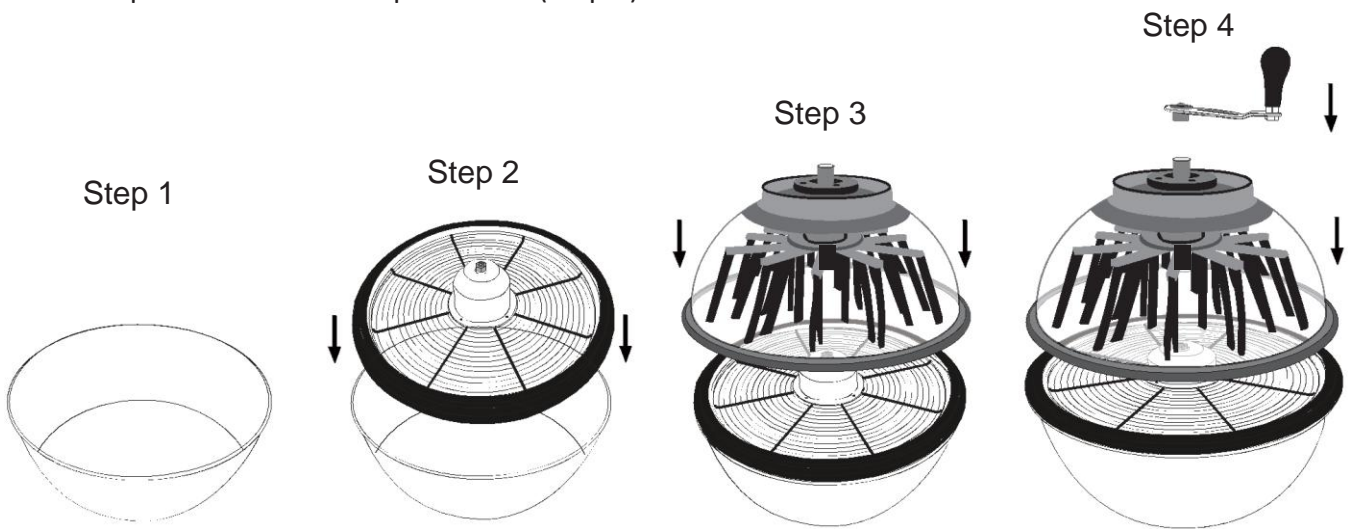




Bowl Trimmer Instructions for Use

1. Take out the bowl base (Step 1)
2. Fit the spiral grating on it (Step 2)
3. Attach the protective cover (Step 3)
4. Fit the spin handle on the top of cover. (Step 4)

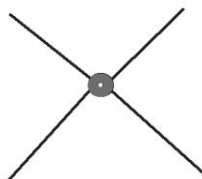
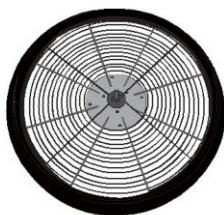


Notes:

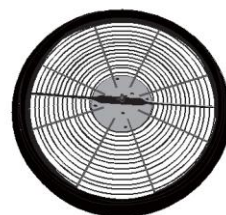
1. 2 Cross complimentary cutting wire blades and 2 steel blade provided.
2. When reattaching the protective cover, you need to line up the hex nut on the spiral grate with the turning handle opening.

Optional: This tumble trimmer is designed to use with 2 kinds of blades: cross and steel blade

Cross Wire Blade



Steel Blade



This product may improve or change without notice.